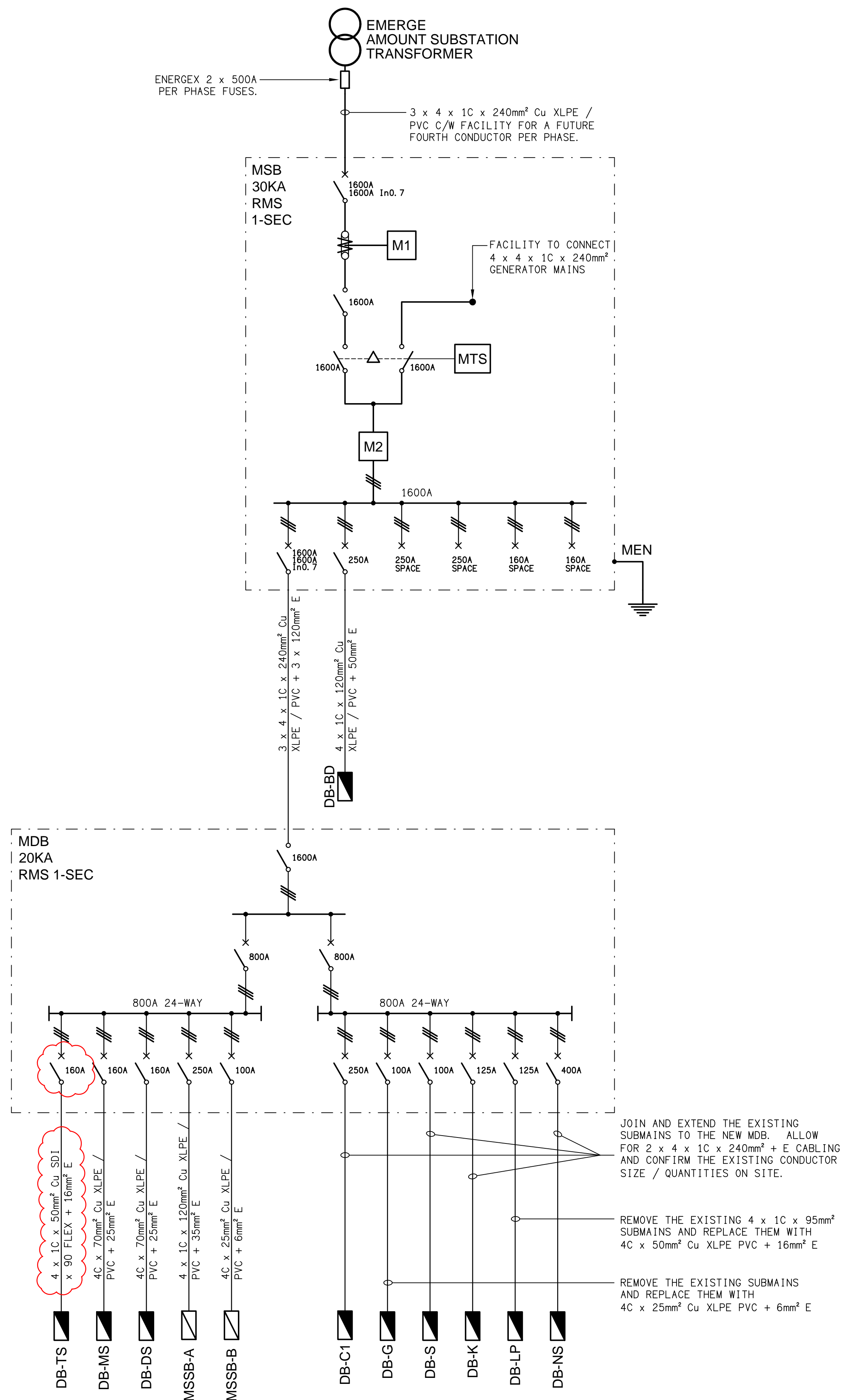


EXISTING SCHEMATIC
POWER CONFIGURATION
NOT TO SCALE



PROPOSED SCHEMATIC
POWER CONFIGURATION
SCALE 1:100

SWITCHBOARD NOTES

PROVIDE THE SITE MAIN SWITCHBOARD (MSB) AS FOLLOWS:

- PLINTH MOUNTED MECHANICALLY FIXED TO THE WALL.
- QECM COMPLIANT RETAIL METERING.
- PROVIDE A COPY OF THE ENERGEX APPROVAL OF THE MSB.
- 92268 KEY LOCKABLE IP66 (316 STAINLESS STEEL OR ALUMINIUM) POWDER COATED COLOURBOND SURF MIST C/W INTERNAL TEMPERATURE CONTROLLED ANTI CONDENSATION HEATERS IN EACH CUBICAL.
- IP56.
- ENSURE THE MSB IS DESIGNED TO OPERATE IN DIRECT SUNLIGHT WITH AN AMBIENT TEMPERATURE OF 45 DEGREES.
- WHITE ESCUTCHEON.
- BOTTOM ENTRY CABLE ACCESS ONLY.
- SUN / RAIN HOOD.
- DOORS ON ALL CUBICLES WITH 3 POINT 92268 KEY LOCKABLE HANDLES OTHER THAN THE METER CUBICAL DOOR WHICH IS TO HAVE AN ENERGEX PADLOCK.
- LIFT OFF HINGES ON ALL DOORS AND ESCUTCHEONS.
- 1/4 TURN LATCHES AND D HANDLES ON ALL ESCUTCHEONS.
- ALL SWITCHGEAR TO BE NHP/TERASAKI.
- PROVIDE SHOP DRAWINGS FOR APPROVAL.
- ENERGEX PADLOCK ON THE METER CUBICAL.
- TWO ENERGEX PADLOCK KEYS AND TWO 92268 KEYS.
- PROVIDE SHOP DRAWINGS FOR APPROVAL.
- OBTAIN APPROVAL FROM ENERGEX OF THE NEW MSB SHOP DRAWINGS.

PROVIDE THE MDB AS FOLLOWS:

- PLINTH MOUNTED MECHANICALLY FIXED TO THE WALL.
- BOTTOM ENTRY CABLE ACCESS.
- IP44.
- LIGHT GREY ENCLOSURE WHITE ESCUTCHEON.
- 3 POINT LOCKABLE HANDLES ON ALL DOORS.
- LIFT OFF HINGES ON ALL DOORS AND ESCUTCHEONS.
- 1/4 TURN LATCHES AND D HANDLES ON ALL ESCUTCHEONS.
- ALL SWITCHGEAR TO BE SCHNEIDER OR NHP/ TERASAKI.
- PROVIDE SHOP DRAWING FOR APPROVAL.

PROVIDE DISTRIBUTION BOARDS DB-TS, DB-MS AND DB-DS AS FOLLOWS:

- WALL MOUNTED.
- TOP AND BOTTOM ENTRY CABLE ACCESS.
- IP44.
- LIGHT GREY ENCLOSURE WHITE ESCUTCHEON.
- 3 POINT LOCKABLE HANDLES ON ALL DOORS.
- LIFT OFF HINGES ON ALL DOORS AND ESCUTCHEONS.
- 1/4 TURN LATCHES AND D HANDLES ON ALL ESCUTCHEONS.
- ALL SWITCHGEAR TO BE SCHNEIDER OR NHP/ TERASAKI.
- PROVIDE EACH DB WITH A REMOVABLE HAT SECTION THE SAME WIDTH DEPTH AND COLOUR AS THE DB FROM THE UNDERSIDE OF THE DB TO THE FLOOR AND THE TOP OF THE DB TO THE CEILING ABOVE TO PROVIDE CABLE ACCESS FROM THE DB TO THE FLOOR AND THE CEILING SPACE. PROVIDE THE HAT SECTIONS WITH A CONCEALED VERTICAL CABLE TRAY.
- PROVIDE SHOP DRAWINGS FOR APPROVAL.

ELECTRICAL DESIGN GROUP BRISBANE
PTY LTD
ACN 092 710 793
TRADING AS:
ELECTRICAL DESIGN GROUP

THE COPYRIGHT OF THIS DRAWING
REMAINS THE PROPERTY OF THE
ELECTRICAL DESIGN GROUP.
USE FIGURED DIMENSIONS
IN PREFERENCE TO SCALE.
ALL DIMENSIONS TO BE
VERIFIED ONSITE.

ELECTRICAL DESIGN GROUP
ELECTRICAL BUILDING SERVICES CONSULTANTS
BRISBANE GOLD COAST

P.O.Box 15, Sherwood Q.4075
Phone: (07) 3278 4375
Email: brisbane@edg.net.au
Web: www.edg.net.au

PROJECT:
**KINGS CHRISTIAN COLLEGE - REEDY CREEK
GLAs & STUDENT SERVICES KCC49**

68 GEMVALE ROAD, REEDY CREEK, QUEENSLAND

E	CONSTRUCTION	29/09/2025
REV:	DESCRIPTION:	DATE:

DRAWING:
**ELECTRICAL SERVICES
POWER SCHEMATICS**

SCALE: NOT TO SCALE AT A1	PROJECT NO: C2717a	DRAWING NO: E13	REVISION: E
------------------------------	------------------------------	---------------------------	-----------------------